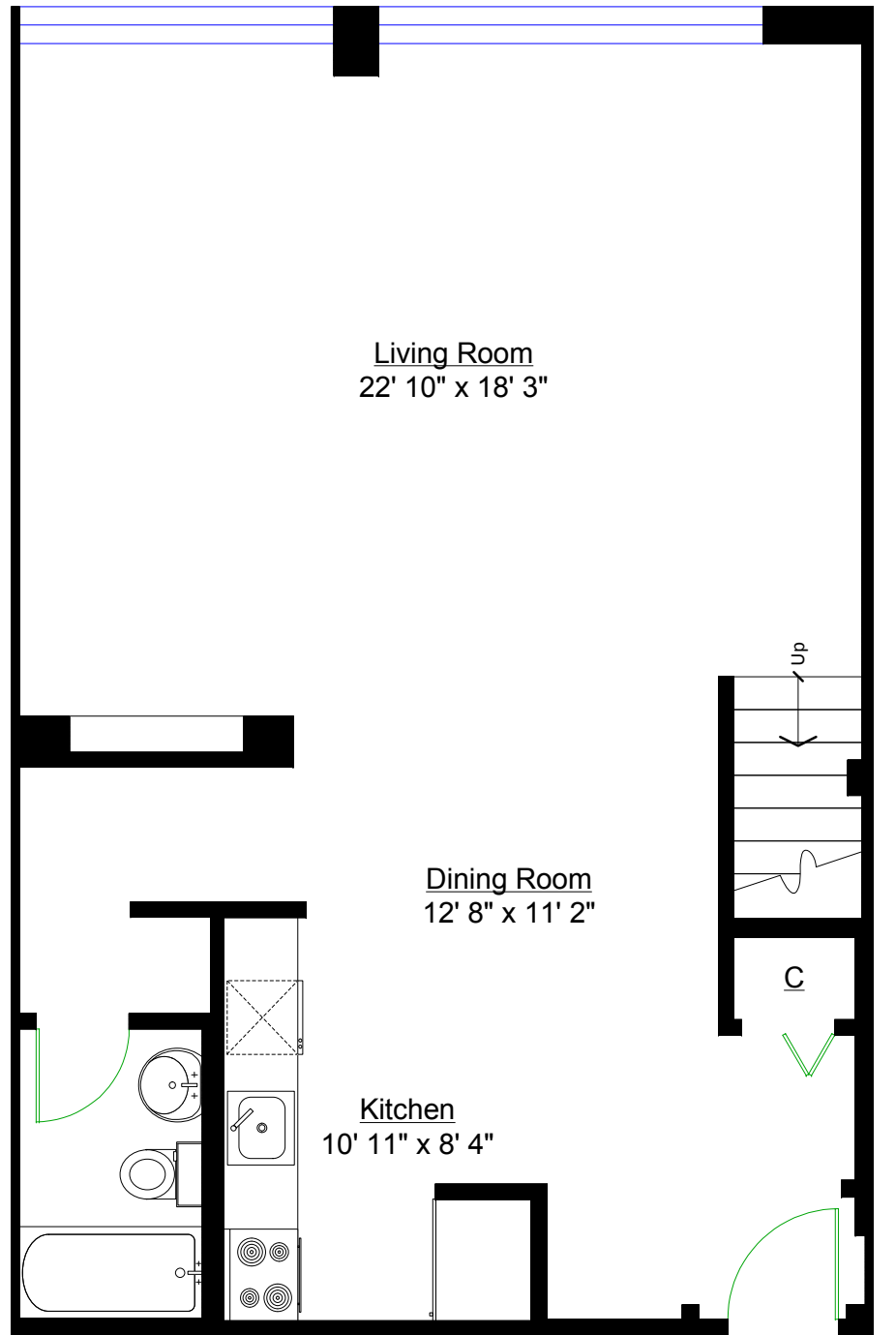
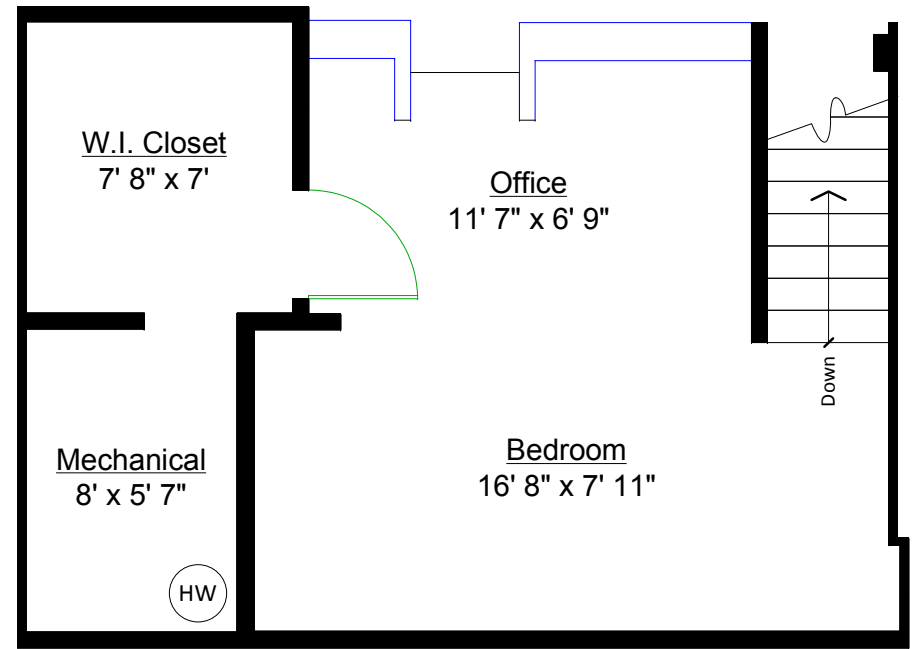


#207 – 1580 Lorne Street, Vancouver



MAIN LEVEL

0 ft. 2 ft. 4.8 in 4 ft. 8 ft.



UPPER LEVEL



Totals**

Main Level:	840 sq. ft.
Upper Level:	331 sq. ft.
TOTAL(Fin.):	1,171 sq. ft.
Mechanical:	48 sq. ft.
GRAND TOTAL:	1,219 sq. ft.

** Approx. based on interior measurements to exterior walls
 ** Total square footage not taken from original blueprints